

# CATAPULT20™

Instrumentation Vessel

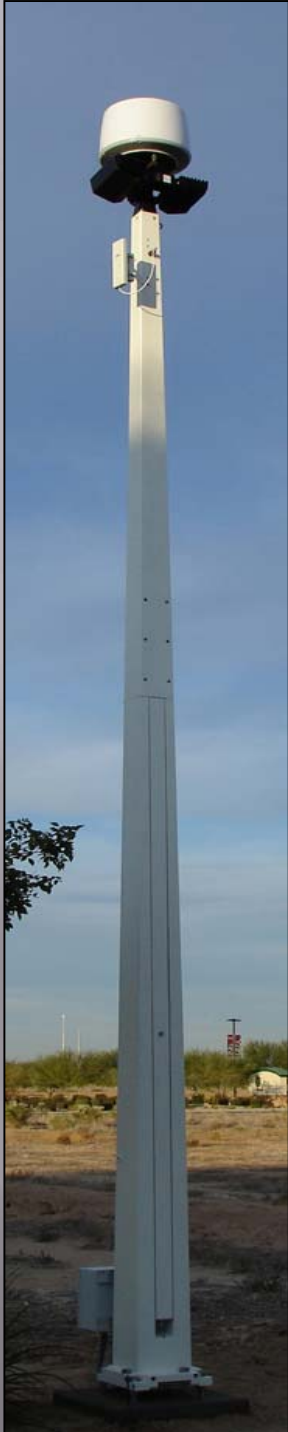


# INSTRUMENTATION VESSEL

Old School Payload Lowering & Structurally Stiff

Elegant Architectural Design & Environmental Finishes

Simple Installation – No Bucket Truck – Easy Payload Access



The CATAPULT20™ is an integrated platform for instrumentation payloads. At the top is a tethered MIL circular connector pinned for Ethernet, Power, Serial, Discretes and Spares. The cable runs through the vessel. Optional proximity sensors, strobe lamps and sirens can be added to thwart vandalism. The internal harness can be customer configured at time of order.

The CATAPULT20™ can be man-lifted to its vertical position without the payload attached (use of the leveling plate and hinge assembly required). The top half folds down to mount and service the payload. No bucket truck is needed.

All Aluminum construction with stainless steel fasteners give the structure stiffness, light weight and long life. The base plate has four mounting holes for one inch threaded stock on a twelve inch square pattern. Standard and custom paint are offered to match environmental goals.

Ground base, Nylon lanyards, leveling plate, hinge assembly and tamper wrenches are offered as options. Installation and operational training by the Factory is required for safe operation. Power plants, processors and sensors are available.

## CATAPULT20™

### Payload Capacity:

45 Kg (100lb)  
10 cm Sq Pad (4")  
8 cm Sq Pattern (3/8"-16 Tapped)

### Mechanical:

6 m Tall (20')  
64 Kg (140 lb)  
36 cm Sq Base (14")  
30 cm Sq 25mm Dia Hole Pattern  
Payload Lowering System

### Electrical:

MIL Circular at Top  
PowerJack/RJ45/DB9 at Bottom  
Internal Self-Security Connectors  
Customer Defined Harness  
Option

### Wind Loading:

200 kmph, 1.28 Gust Factor  
8mm Top Deflection, No Payload

### Self-Security Options

Passive Infrared - Panoramic  
Strobe Light  
Siren, Loud Speaker

### Life

25 Year Expectation  
5 Year Limited Warranty  
Operator Training Required

### Shipping Crate

Frame Pine Skid – 41 Kg (90 lb)  
.5m x.6m x 4m (19"Wx22"T x161"L)



**JETprotect Corporation**



**Research / Manufacturing**

San Jose International Airport  
400 Martin Avenue  
Santa Clara, CA 95050

408-562-0001  
info@jet-protect.com  
www.jet-protect.com

EXCLUSIVE DISTRIBUTION & SALES



**SIGHT  
SECURITY  
CORPORATION**

seeing is believing™

Calgary, Alberta Canada  
MikeMac@sightsecurity.org  
[www.sightsecurity.org](http://www.sightsecurity.org)  
403-984-5500